



Workshop 5

Taking into account the non
governmental sector in
environmental health policies



Présidence belge du Conseil de l'Union européenne



trio.be



Marchienne-au-Pont (Charleroi)

An example of the atmospheric pollution health
consequences management with local field
actors

Patrick JADOULLE, G.P.

Maison médicale « La Glaise »

Rue Léon Dubois, 241

B/6030 Marchienne-au-Pont

++ 32 71 31.87.47.

mm.laglaise@belgacom.be

Présidence belge du Conseil de l'Union européenne

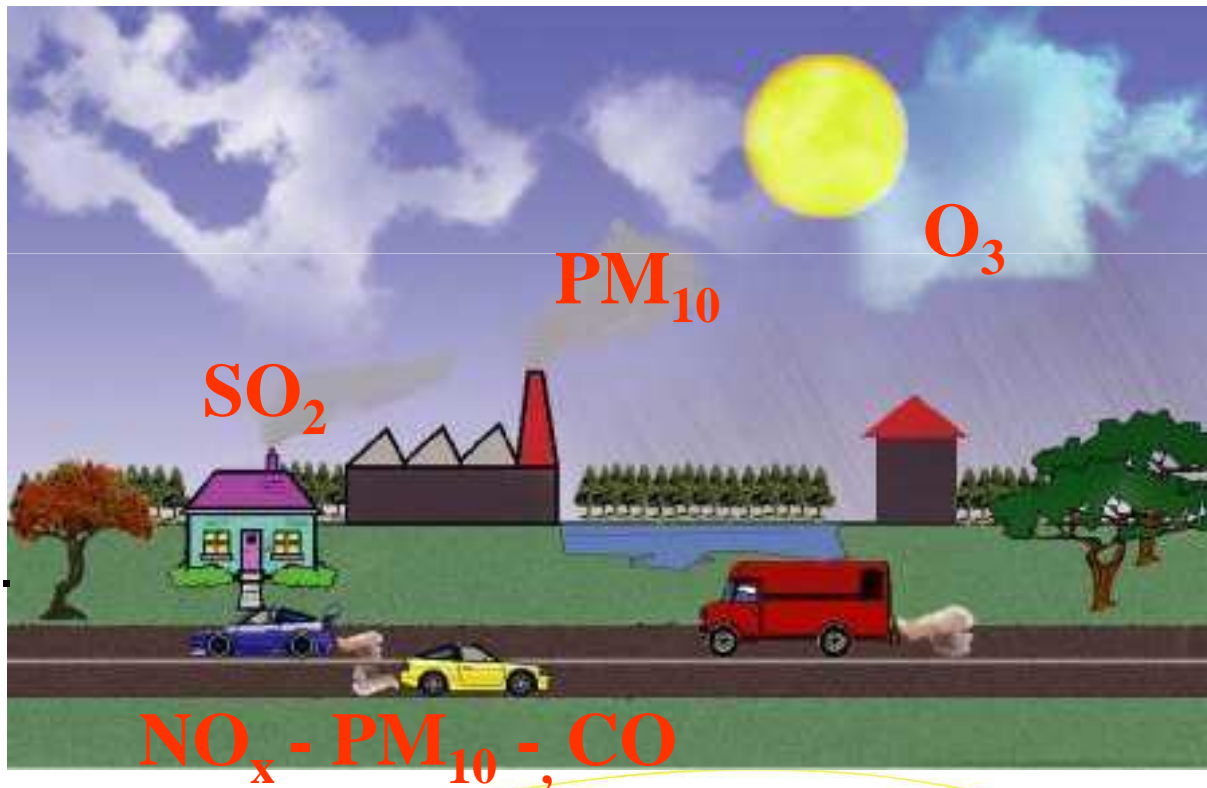


Atmospheric pollution

More or less distant dispersal of pollutants

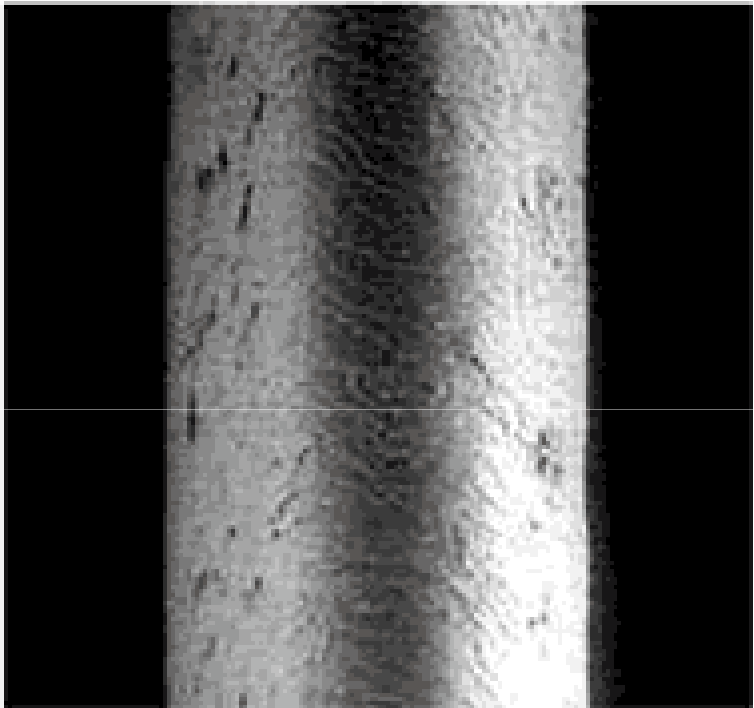
Transformation of pollutants in the air

Sources:
Industry,
heating,
transport, ...

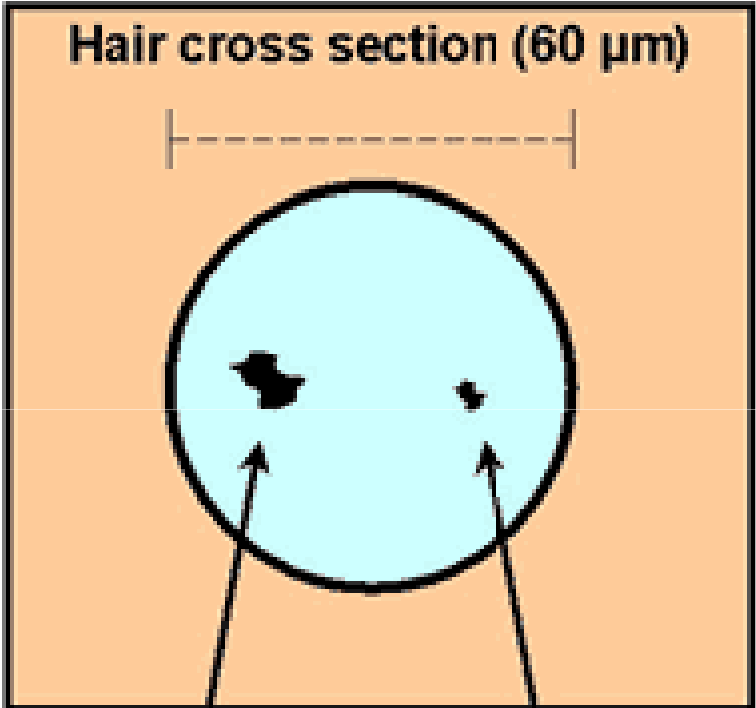


Pollutants entering houses

Fine Particulate Matters (PM)

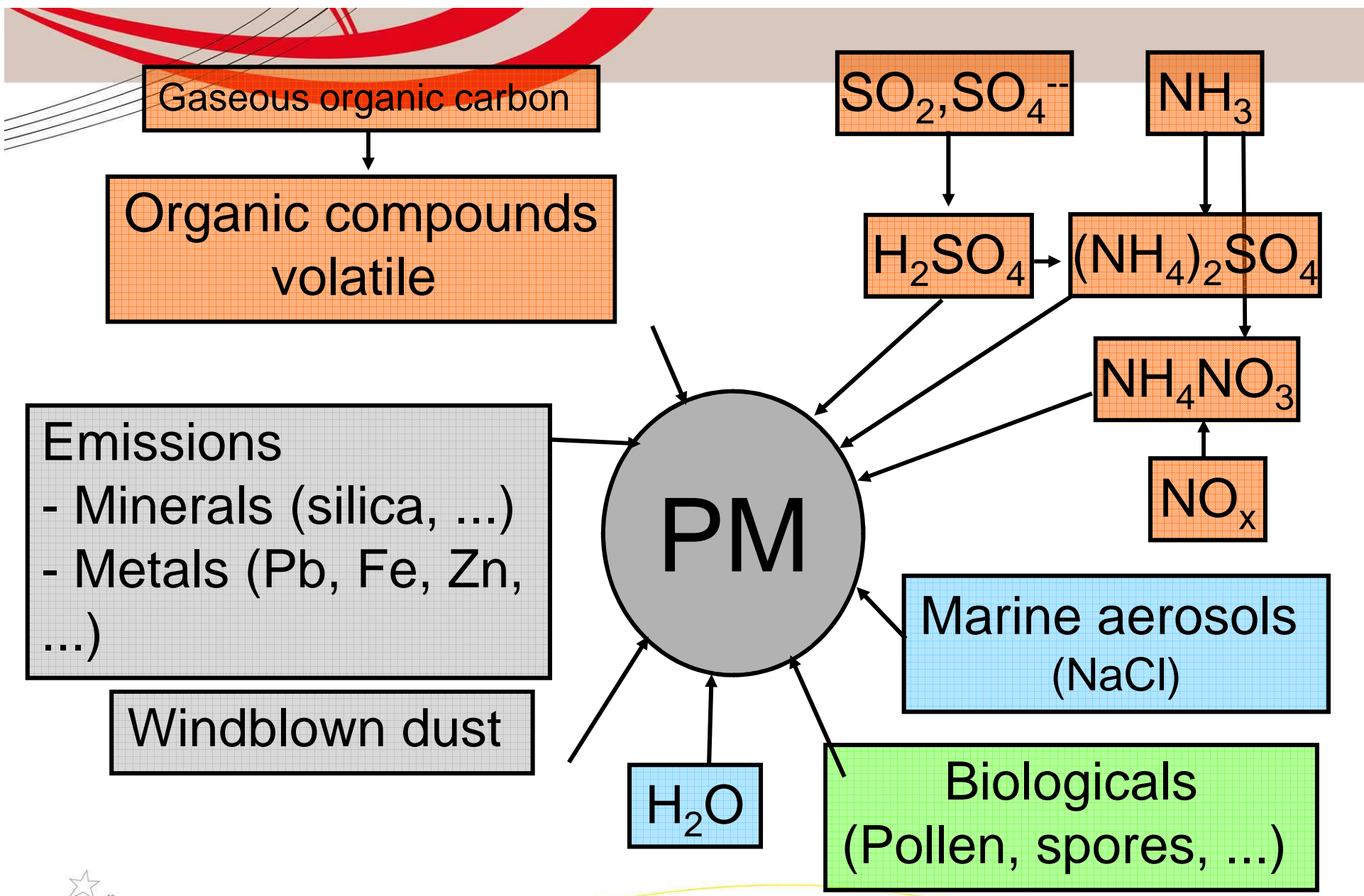


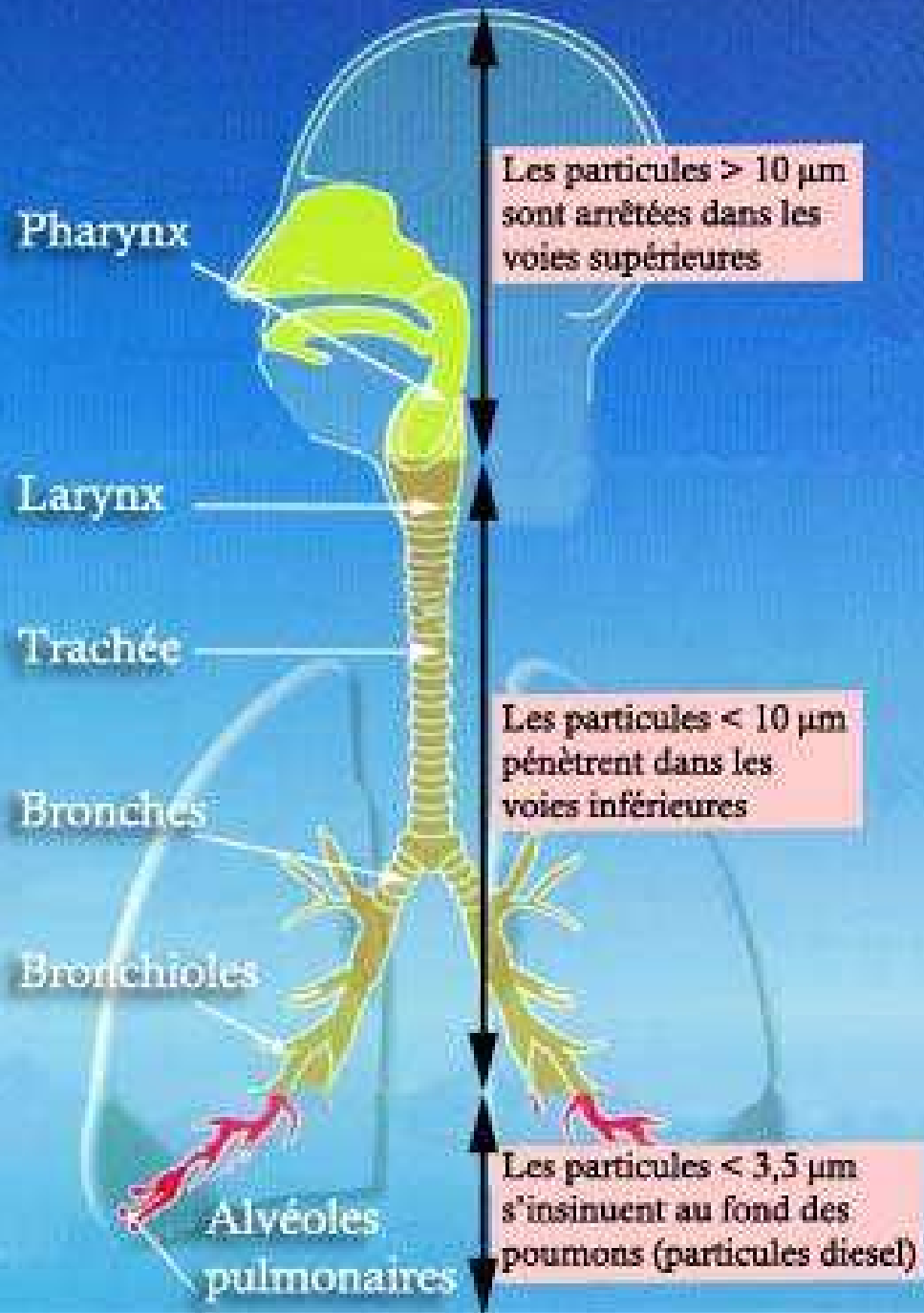
Human Hair
(60 µm diameter)



PM10
(10 µm)

PM2.5
(2.5 µm)





Les particules $> 10 \mu\text{m}$ sont arrêtées dans les voies supérieures

Les particules $< 10 \mu\text{m}$ pénètrent dans les voies inférieures

Les particules $< 3,5 \mu\text{m}$ s'insinuent au fond des poumons (particules diesel)

Pharynx

Larynx

Trachée

Bronches

Bronchioles

Alvéoles pulmonaires



Effects of PM on health (WHO 2006)

- Increased risk for cardiovascular and respiratory diseases
- Increased risk for lung cancer
- Average reduction of life expectancy :
8,6 months in Europe – 13,2 months in Belgium



Atmospheric pollution and health



Between rules
and reality...



E.U. :

- max 35 days $> 50 \mu\text{g PM}_{10}/\text{m}^3$ in the air over a year
- annual average concentration $< 41 \mu\text{g}/\text{m}^3$



[PM10] in Marchienne-au-Pont in 2006 :

- **175 days of average daily concentration**
> 50 μ g/m³
- **annual average concentration**
= 59 μ g/m³

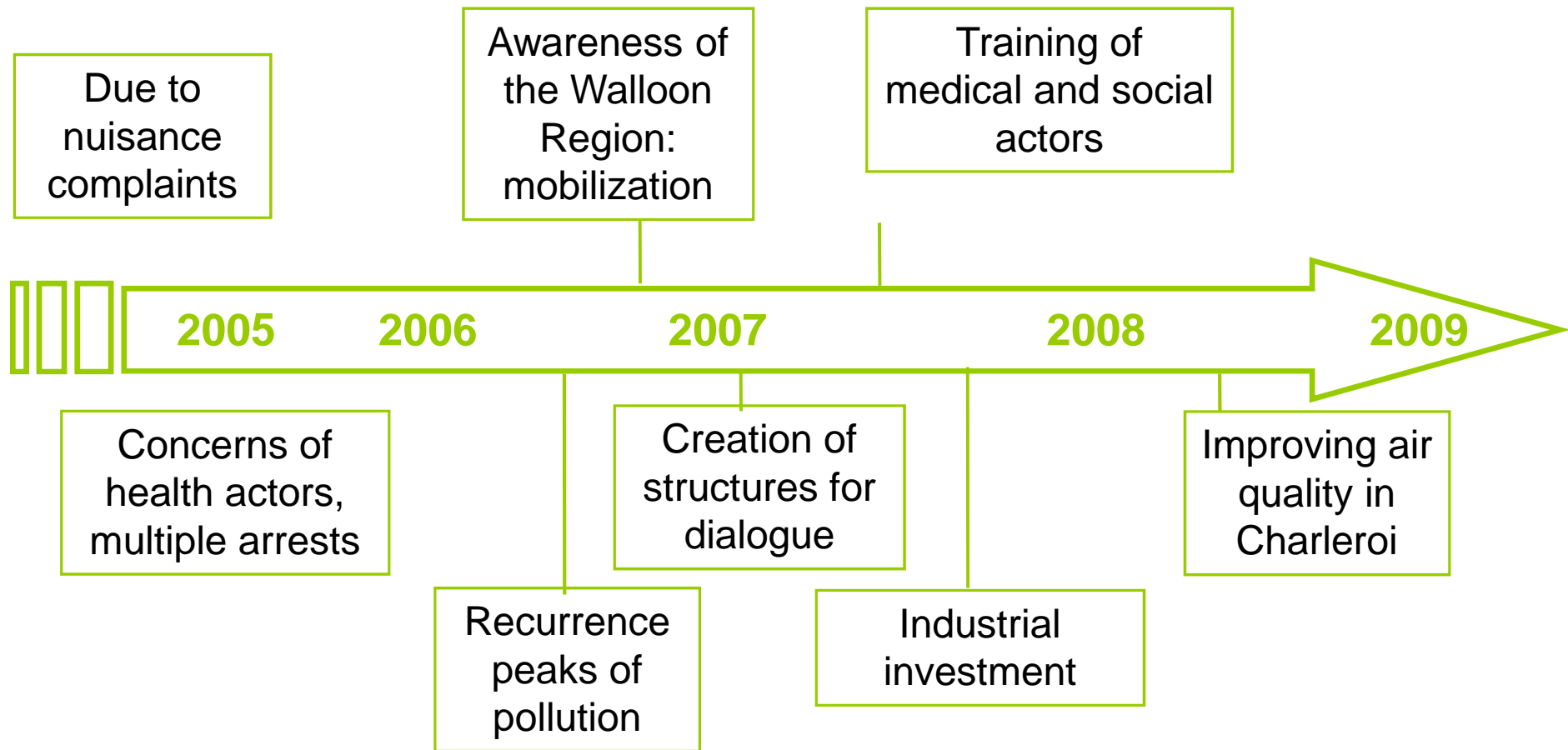
→ there is a problem!



Présidence belge du Conseil de l'Union européenne

EU trio.be

Timeline



Wallonie

Présidence belge du Conseil de l'Union européenne





structures for dialogue and consultation

- « Environment and health » Group
- Technical & Scientific Committee
- Monitoring Committee



Présidence belge du Conseil de l'Union européenne



EHV trio.be



«Environment & Health» Group :

- Assess the impact of air pollution on the health of residents
- Inform and train health professionals and social workers
- Inform residents
- Contribute to the wellbeing of the population





«Environment & Health» Group : Composition

- Expert appointed by residents
- Maison Médicale « La Glaise »
- « Espaces citoyens » from Public Centre for Social Activation
- « Espace Environnement » - ASBL
- City officials and Public Centre for Social Activation
- Observatoire de la Santé du Hainaut
- Institut Scientifique de Santé Publique
- Regional administrations and Community Environment and Health
- Offices of Regional Ministers and Community Environment and Health



Présidence belge du Conseil de l'Union européenne



eu trio.be




Technical and scientific committee : missions

- validate the technical options proposed by industry,
- study and propose concrete technical solutions, in consultation with the industries concerned.

Technical and scientific committee : composition (1)

- Président = président of Department of Licensing and Authorization (regional administration)
- Technical expert of the research center of metallurgy
- Representatives of residents:
 - President of the inhabitants committee
 - Technical expert
 - Environmental expert





Technical and scientific comity : composition(2)

- Officials from the city of Charleroi :
- Walloon Region :
 - Ministries of Environment and Health
 - Institut Scientifique de Service Public (ISSeP)
 - Department of Licensing and Authorization (DPA)
 - Environmental Police Industriels (DPE)
- Experts :
 - Scientific experts from the administration
 - University scientific experts



Monitoring Committee : missions

Monitoring of industrial investments to improve the air quality by being regularly informed of :

- the status of industrial investments;
- analysis results of air quality following the measures put in place;
- reports prepared by the technical and scientific committee.



Monitoring Committee : composition

- Chair = Chairman of Committees of riparian
- Many residents
- Deputy major of the environment of the city of Charleroi
- Unions of the industries concerned
- President of Scientific & Technical Committee
- « Espace environnement » - ASBL as ombudsman



Industrial mobilization

- Leverage = Review forthcoming environmental permits that define the operating conditions
 - The three steel plants presented an investment program
 - new filters and treatment programs
 - demolition of disused facilities
 - storage and disposal of dust
- over 100 million euros



Présidence belge du Conseil de l'Union européenne



Industrial mobilization

- investment examples
 - Steelworks: suction roof and new dedusting
 - Blast Furnace: new suction and filtration equipment
 - Agglomeration : 4 new electrofilters
 - Activated carbon injection to improve combustion
 - Continuous measurements of the concentration of dust



Monitoring

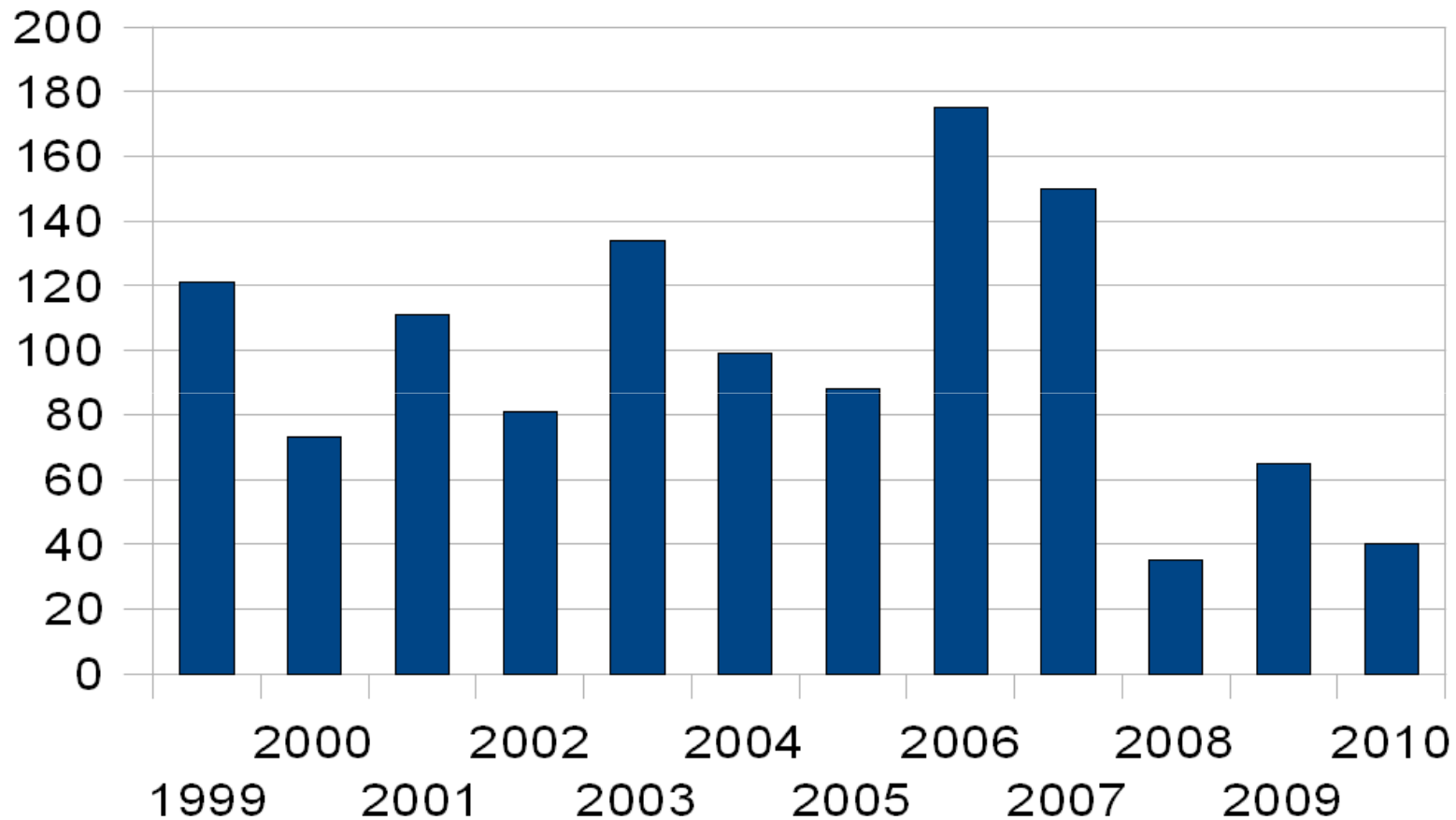
- Five stations measure air pollution in Charleroi :
Interregional Cell for the Environment = **CELINE - IRCEL**):
www.irceline.be
- ISSeP performs periodically air testing
→ quality air significantly improves



Présidence belge du Conseil de l'Union européenne

EU trio.be

Number of days exceeding



Wallonie

Présidence belge du Conseil de l'Union européenne

EU trio.be

Workshop with homemakers

- leaflet
 - 25 questions frequently asked
 - 11 questions sélected
 - Conception : Espaces Citoyens
Maison Médicale La Glaise,
Espace Environnement
 - Validation : workgroup
«Environnement & Health»



Workshop with homemakers

- Themes :
 - Health : respiratory diseases, headache, dépression, allergy, children's health
 - behavior: vegetable consumption, pollution peak, aeration
 - Working conditions in industry
 - Political responsibility



Présidence belge du Conseil de l'Union européenne





THE END